



# BETADET THC-2

Mild amphoteric ingredient  
for gentle formulations

## BETADET THC-2

BETADET THC-2 is a COSMOS approved amphoteric surfactant used mainly as a secondary surfactant in mild formulas like baby products and high quality skin cleansing preparations for daily use.

## BENEFITS

- Mild co-surfactant.
- Good thickening properties – allows to reduce the addition of sodium chloride.
- Foam booster agent even in the presence of oil or soap.
- COSMOS approved.
- Natural origin – 86% Natural content according to ISO 16128.
- Preservative-free.

## PROPERTIES – FEATURES

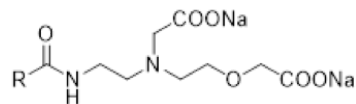
- BETADET THC-2 is compatible with other anionic, non-ionic and amphoteric surfactants.
- BETADET THC-2 reduces the irritation level of anionic surfactants when mixed with them.
- Usage rate: 3 - 30%.
- Suitable for a wide range of pH.
- Main functions of BETADET THC-2:
  - **Detoxifying effect:** it decreases the irritation level of usual anionic surfactants.
  - **Foam booster:** it increases foam level and modifies the quality of the foam.
  - It performs as a viscosity modifier allowing to reduce sodium chloride addition in the final formula.

## PRODUCT DEFINITION

INCI: Disodium Cocoamphodiacetate

EU CAS Number: 68650-39-5

US CAS Number: 68650-39-5



R-CO = coconut-like alkyl chain

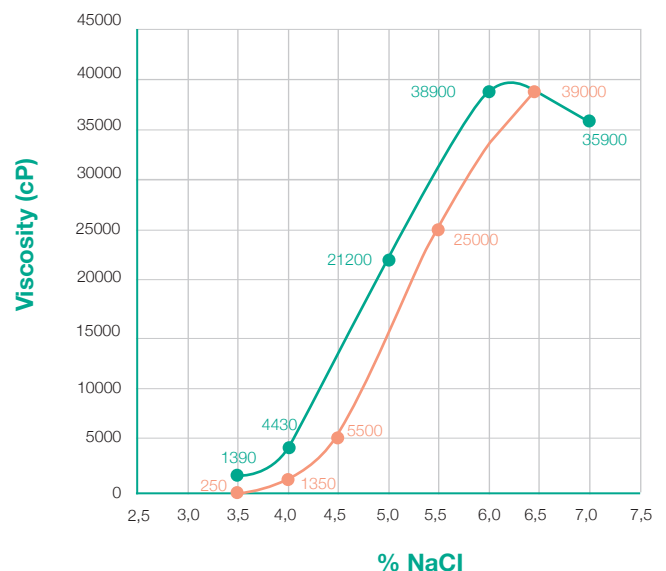
## TYPICAL CHARACTERISTICS

(not part of the specifications)

Appearance (20°C)	Yellowish transparent liquid
Character	Amphoteric

## THICKENING ABILITY

### MODEL FORMULA



10% a.m SLES + 3% a.m amphoteric ● BETADET THC-2 ● SLES





## APPLICATION

- Baby products
- Skin cleansers for sensitive skin
- Facial cleansers
- Mild shower gels
- Mild liquid soaps
- Cream baths
- Intimate hygiene products
- Hair shampoos
- Pet shampoos
- Shaving products

## FORMULATION GUIDELINES

### C-151: SHAMPOO – COLOUR PROTECTION

COMPOSITION	%
EMAL 227E Sodium Laureth Sulfate	22.2
BETADET THC-2 Disodium Cocoamphodiacetate	7.5
DANOX PL-10 Pearling concentrate	4.0
AKYPO RLM 100 Laureth-11 Carboxylic acid	3.3
AMIDET APA-22 Behenamidopropyl Dimethylamine	2.0
Cationic Amino Quaternized Silicone Terpolymer	1.0
Polyquaternium-10	0.2
Additives*	q.s.
Deionized Water	Up to 100

\*Additives: pH adjustment, preservative, fragrance, dyes, etc.

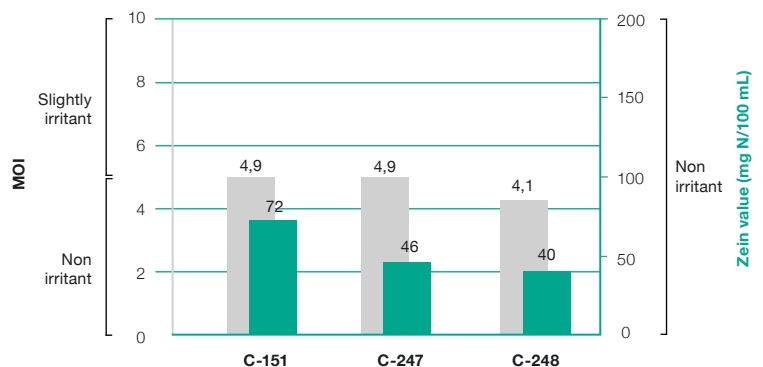
### C-248: SHOWER GEL – ULTRA MILD

COMPOSITION	%
BETADET HR Cocamidopropyl dimethyl Betaine	16.3
BETADET THC-2 Disodium Cocoamphodiacetate	12.0
EXCEPARL LM-LC Lauryl Lactate	1.9
Decyl Glucoside	7.5
Exfolactive	0.2
Additives*	q.s.
Deionized Water	Up to 100

### C-247: STRENGTHENING SHAMPOO

COMPOSITION	%
BETADET HR Cocamidopropyl dimethyl Betaine	16.3
AKYPO FOAM RL 40 Sodium Laureth-4 Carboxylate	13.3
BETADET THC-2 Disodium Cocoamphodiacetate	12.0
EXCEPARL LM-LC Lauryl Lactate	2.0
Decyl Glucoside	7.5
Sodium Chloride	0.5
Panthenol 50%	0.4
Keratin	0.2
Additives*	q.s.
Deionized Water	Up to 100

### IRRITATION POTENTIAL Eyes & Skin Cleansing Products



The information and recommendations in this publication are to the best of our knowledge reliable. However, nothing herein is to be construed as a warranty or representation. Users should make their own tests to determine the applicability of such information or the suitability of any products for their own particular purpose. Statements concerning the use of the products described herein are not to be construed as recommending the infringement of any patent and no liability for infringement arising out of any such use is assumed.

For more information visit us at our web site [www.kaochemicals-eu.com](http://www.kaochemicals-eu.com) or contact us at [marketing@kao.es](mailto:marketing@kao.es)  
(Edited September 2021. EU version)

